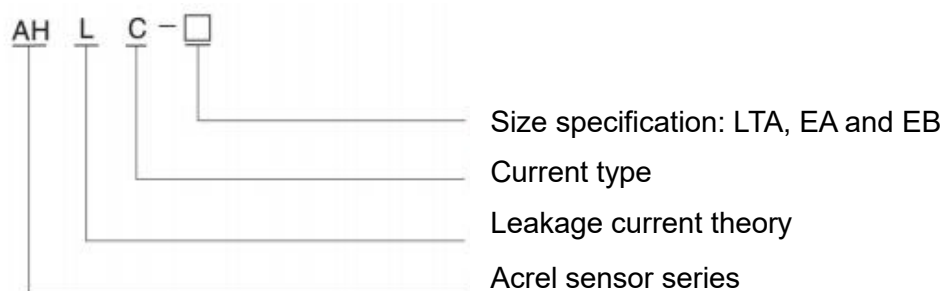


AHLC DC leakage current sensor

1. Product Introduction

DC leakage current sensor is a measuring module that converts the measured direct current into the proportional direct current or voltage signal according to the flux gate theory and the input side is highly insulated from the output side. Typical outputs include 4-20mA, DC0-5V and DC0-10V signals. These standard signals can be acquired by various devices such as PLC, RTU and DAS card and used for different current monitoring applications. leakage current transformerS surround the outlet + and - of DC circuit. It detects output signals of sensors in circuit branches. If the insulation in circuit branches is normal, the current passing the sensor must be equal in the opposite direction. The output signal is zero. If a circuit branch is grounded, the differential current passes the leakage current transformer and the output of sensor is not zero. Therefore, it is possible to identify the grounded branch in the DC system by detecting output signals from circuit branches. The theory guarantees the accurate line identification and prevents the influence of distributed capacitance.

2. Explanation for type



3. Technical Parameters and Overall Dimensions

Parameters	Index		
	AHLC-LTA	AHLC-EA	AHLC-EB
Rated Input Current (DC)	DC 0~ (10mA~2A)		
Rated Output Voltage	±5V		
Accuracy Class	1.0		
Power Voltage	DC±15V (±20%)		
Zero Offset Voltage	±20mV		
Offset Voltage Drift	≤±1.0mV/°C		
Linearity	≤0.3%FS		

Jiangsu Acrel Electrical Manufacturing Co., LTD.

Address: No.5 Dongmeng Road, Dongmeng industrial Park, Nanzha Street, Jiangyin City, Jiangsu Province, China

TEL./Fax: 0086-510-86179970

Postcode: 214405

Web-site: www.jsacrel.com

E-mail: JY-ACREL001@vip.163.com

Response Time	$\leq 300\text{ms}$
Isolation Voltage	2.5kV/50Hz/1min
Operating Temperature	$-40^{\circ}\text{C}\sim 85^{\circ}\text{C}$
Storage Temperature	$-40^{\circ}\text{C}\sim 85^{\circ}\text{C}$
Consumption	$\leq 0.5\text{W}$

4. Spec. and size (unit: mm)

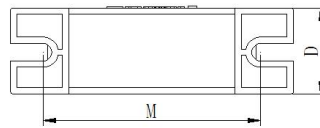
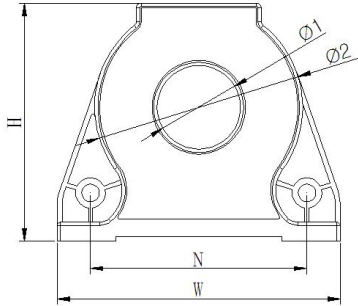


Fig.1

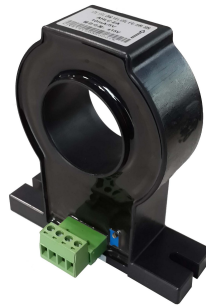


Fig.2



Fig.3

Size specification	Outline size(mm)				Through size(mm)	Mounting size(mm)		Figure
	W	H	D	Φ 2	Φ 1	M	N	
AHLC-LTA	68	57	20	50	20	52	52	Fig.1
AHLC-EA	100	108	30	75	40	78	/	Fig.2
AHLC-EB	120	112	30	94	60	98	/	Fig.3

5. Cross-reference tables of spec. -parameter

Specification	Rated current	Power supply	Rated output	Measuring aperture (mm)	Precision degree
AHLC-LTA	DC 0~(10mA~2A)	$\pm 15\text{V}$	5V	$\phi 20$	1
AHLC-EA	DC 0~(10mA~2A)	$\pm 15\text{V}$	5V	$\phi 40$	1
AHLC-EB	DC 0~(10mA~2A)	$\pm 15\text{V}$	5V	$\phi 60$	1

Jiangsu Acrel Electrical Manufacturing Co., LTD.

Address: No.5 Dongmeng Road, Dongmeng industrial Park, Nanzha Street, Jiangyin City, Jiangsu Province, China

TEL./Fax: 0086-510-86179970

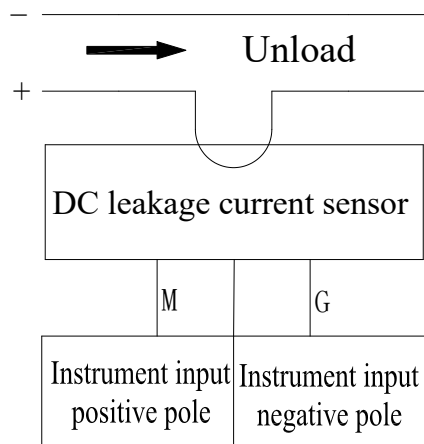
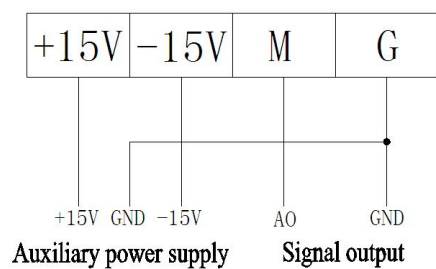
Postcode: 214405

Web-site: www.jsacrel.com

E-mail: JY-ACREL001@vip.163.com

6. Wiring method

● Definition of wiring terminals



Jiangsu Acrel Electrical Manufacturing Co., LTD.

Address: No.5 Dongmeng Road, Dongmeng industrial Park, Nanzha Street, Jiangyin City, Jiangsu Province, China

TEL./Fax: 0086-510-86179970

Postcode: 214405

Web-site: www.jsacrel.com

E-mail: JY-ACREL001@vip.163.com